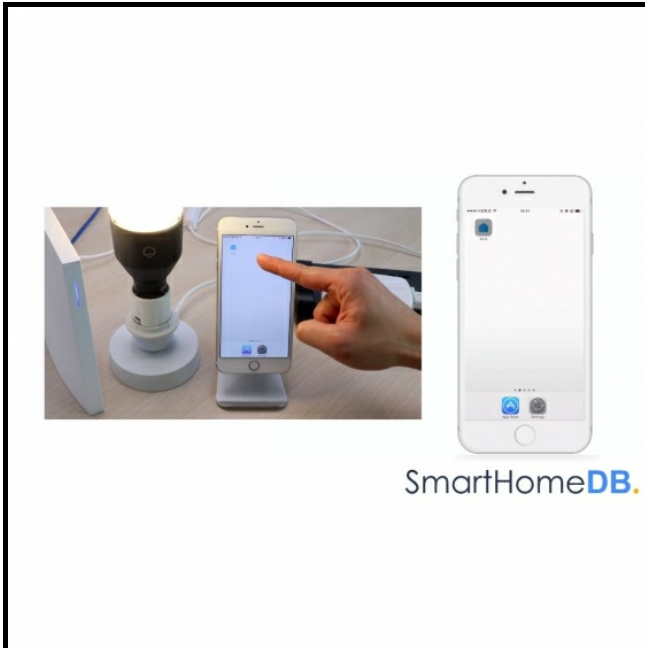
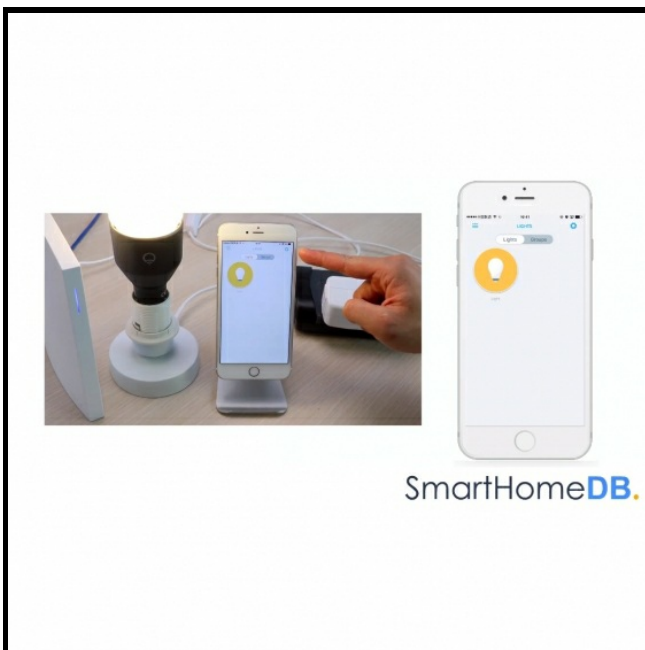


## Step 1



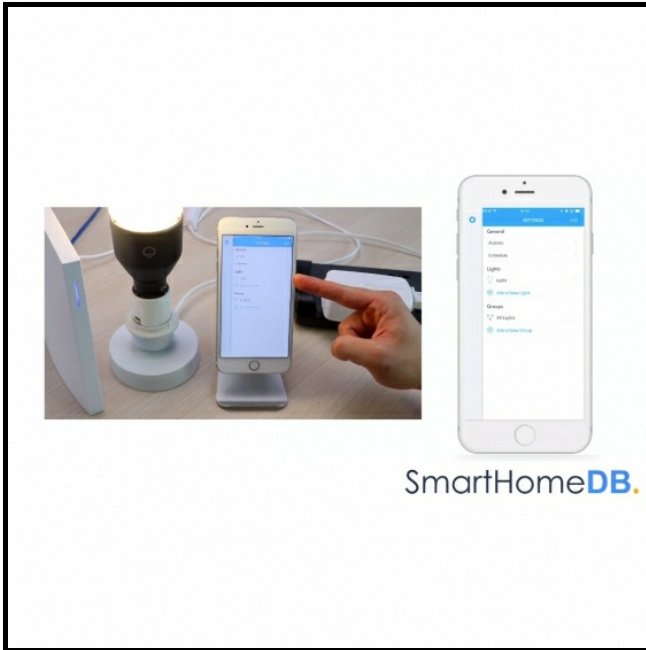
- Open the Wink App on your mobile device.

## Step 2



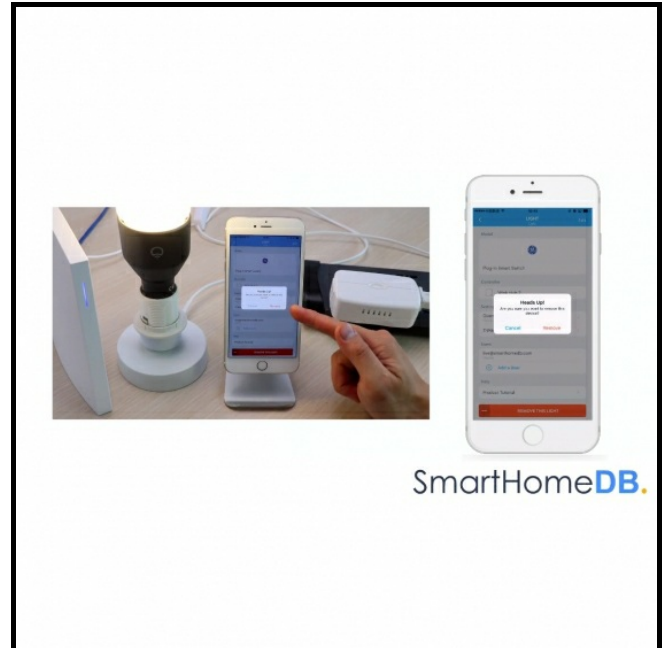
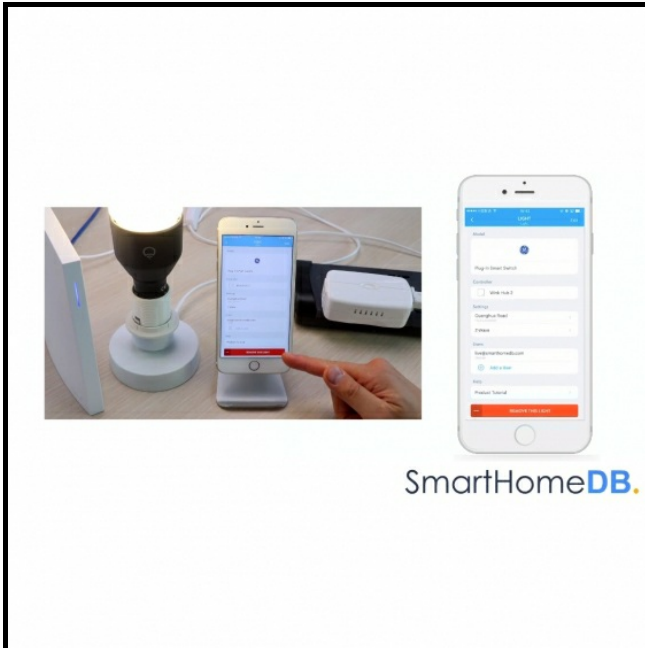
- Tap on the 'Settings' icon at the right top.

### Step 3



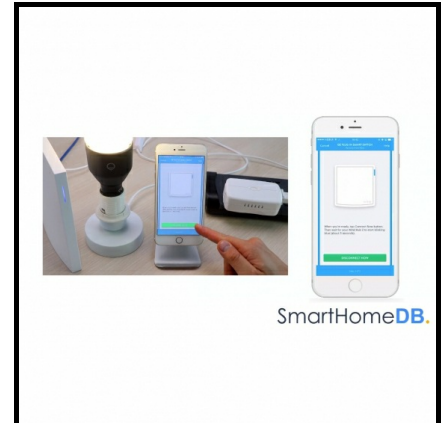
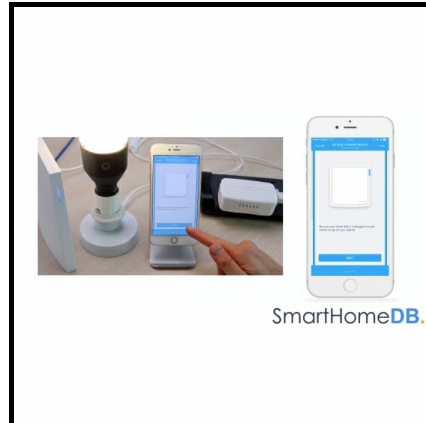
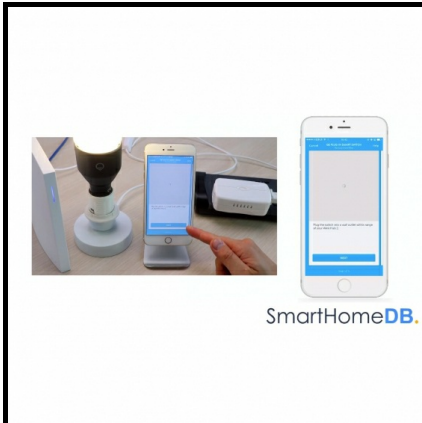
- Tap on the device which is associated with the GE Smart Switch.

## Step 4



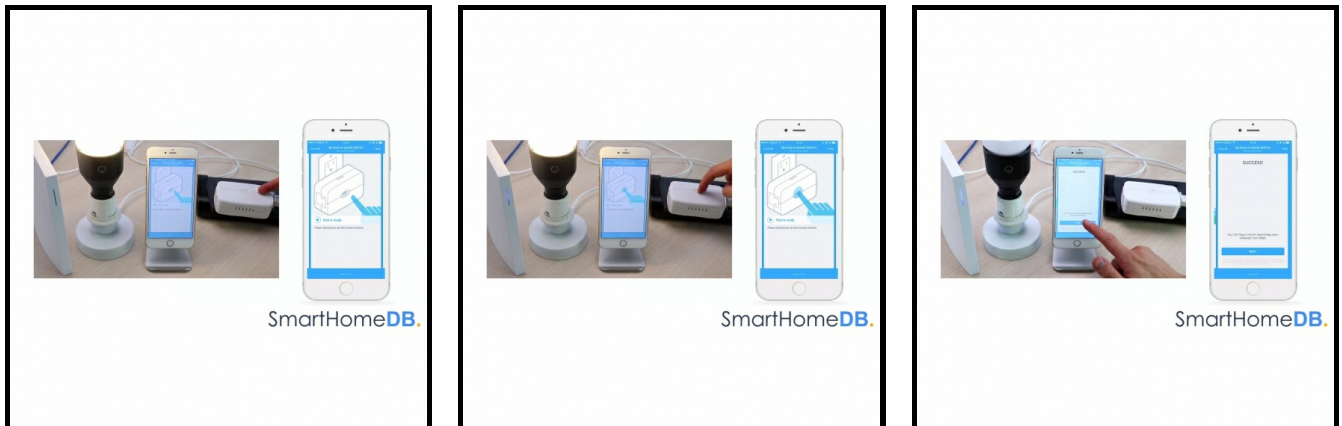
- Scroll down and tap on 'Remove This Device'.
- Tap on 'Remove'.

## Step 5



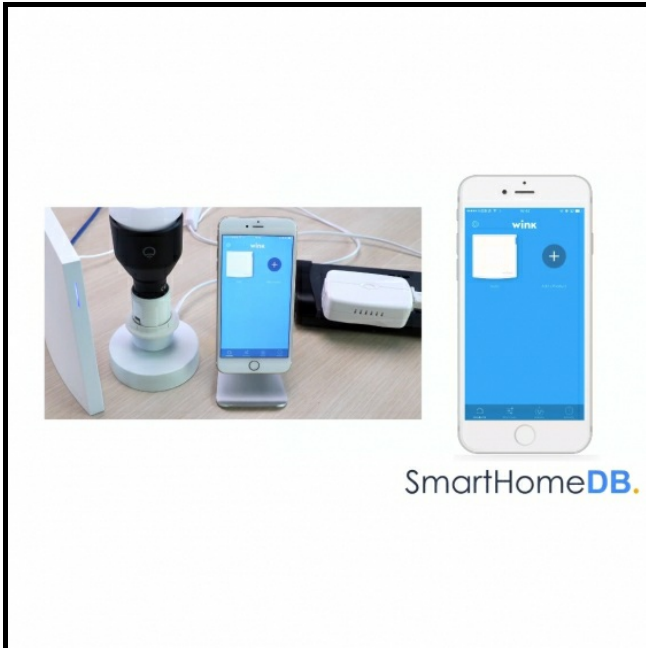
- Tap on 'Next'.
- Tap on 'Next'.
- Tap on 'Disconnect Now'.

## Step 6



- Press on the Action Button found at the front of the GE Smart Switch.
- The Wink App will show a confirmation message indicating that the GE Smart Switch has been successfully removed from Wink.
- Tap on 'Next'.

## Step 7



- You have hereby successfully unpaired the GE Smart Switch from the Wink Hub 2.