

INSTALLATION



INSTRUCTIONS

UPGRADING STANDARD SWITCHES TO Z-WAVE

REPLACING EXISTING SWITCHES WITH THE ZW15S-N

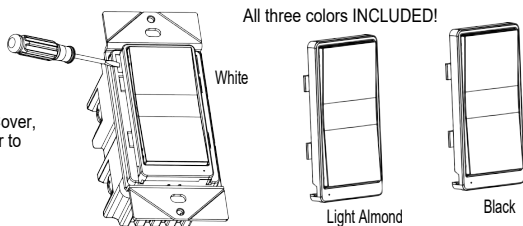
Replacing a standard light switch with a smart Z-Wave switch is a simple way to modernize your home by adding programmable lighting control to your smart device.

DESCRIPTION

The **ZW15S-N** by itself is a Single Pole switch. Our unique wiring method combined with Advanced Z-Wave technology allows for multiple switches (requires ZW3K-N) to control a single Load manually at the devices or remotely from a computer, smart phone or tablet in Real Time. The ZW15S-N is fully compatible with other Z-Wave devices and it can be added to most Z-Wave compliant controllers.

FEATURES

- Replaces a standard 120VAC, 15Amp wall switch with a technologically advanced switch that can be manually controlled at the device or remotely through the Z-Wave network.
- Set scenes, schedule events (Program ON/OFF times like a timer), and even turn ON/OFF when a motion or door sensor goes off.
- Can be used as a Single Pole switch or 3-Way (Multi-location) with ZW3K-N Auxiliary Switch (sold separately).
- A blue LED night light can be programmed to come on when the load is ON or OFF.
- 3 Interchangeable Color Face Plates included (white, light almond, and black).
- Compatible with CFL, fluorescent, incandescent, and halogen bulbs.



To Replace the Face Cover, use a small screwdriver to pry off the cover

REQUIREMENTS

Z-Wave devices require a connection to a compatible hub. Once the device is properly added to the hub, it can be managed and customized to your needs. Please visit www.enerwaveautomation.com for a list of compatible hubs. NEUTRAL wire is required.

SPECIFICATIONS

Voltage.....	120VAC, 60Hz
Incandescent.....	1000W
Ballast.....	1200VA
Resistive.....	1800W(15A)
Motor.....	1/2 HP
Operating Temperature.....	32-104° F
Z-Wave Frequency.....	908.42 MHz
Range.....	Up to 100 feet line of sight
.....	between the Wireless Controller and the closest Z-Wave receiver module.

WARNING: Turn the POWER OFF at the circuit breaker before installing the Switch

Read and understand these instructions before installing. This device is intended for installation in accordance with the National Electric Code and local regulations. It is recommended that a qualified electrician performs this installation. Make sure to turn off the circuit breaker or fuse(s) and make sure power is off before wiring the device. Exercise extreme caution when using Z-Wave devices to control appliances. Operation of the Z-Wave device may be in a different room than the controlled appliance so an unintentional activation may occur if the wrong button on the remote is pressed. Z-Wave devices can be automatically powered on by programmed events. Unattended or unintentional operation could result in hazardous conditions. Z-Wave enabled devices should never be used to supply power to, control or monitor medical and/or life support equipment. To enable the 3-way function install the ZW3K-N in conjunction with the ZW15S-N. For use with incandescent, halogen, and CFL lights. **Use copper wires only.**

WIRING DIRECTIONS

DO NOT REVERSE THE HOT AND TRAVELER WIRES.

DOING SO WILL VOID YOUR WARRANTY AND THE SWITCH WILL SHORT CIRCUIT.

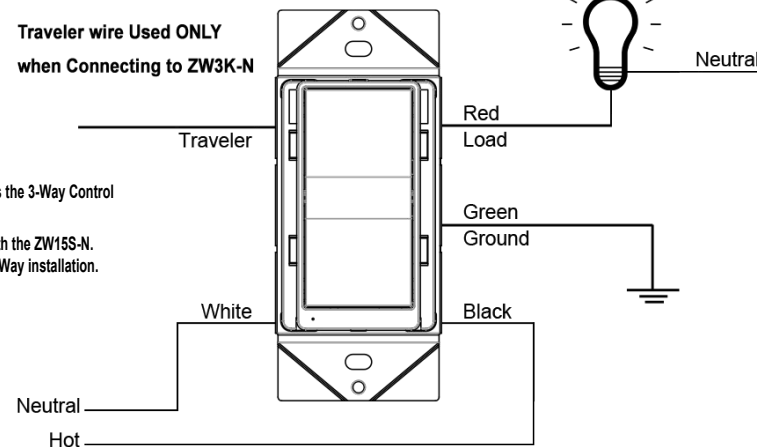
Step 1. Identify all your wires. Label the wires or draw a diagram of existing wires. Make sure there is a NEUTRAL, HOT, and LOAD wire where the ZW15S-N will be installed.

Step 2. Connect the wires according to the Diagram.

- Connect the BLACK wire on switch to the HOT wire.
- Connect the WHITE wire on switch to the NEUTRAL wire.
- Connect the Red wire on switch to the LOAD wire.
- Connect the GREEN wire on switch to the GROUND wire or green GROUND screw on box.

If you have trouble identifying the wires, STOP and consult with an Electrician.

Traveler wire Used ONLY when Connecting to ZW3K-N



For 3-Way installation, the ZW15S-N requires the 3-Way Control Auxiliary Switch ZW3K-N.

A standard 3-Way switch WILL NOT work with the ZW15S-N. Follow the ZW3K-N Instruction Manual for 3-Way installation.

FCC COMPLIANCE STATEMENT

FCC Grant of Equipment Authorizations of this device and transmitters installed in this device can be found at FCC website by entering the FCC ID number on the device.

Caution: Changes or modifications not expressly approved by the part responsible for compliance could void the user's right to operate the equipment. This device complies with Part 15 of the FCC Rules. Operation is subject to the following two conditions: (1) this device may not cause harmful interference, and (2) this device must accept any interference received, including interference that may cause undesired operation of the device.

This equipment has been tested and found to comply with the limits for a Class B digital device, pursuant to part 15 of the FCC rules. These limits are designed to provide reasonable protection against harmful interference in a residential installation. This equipment generates, uses and can radiate radio frequency energy and, if not installed and used in accordance with the instructions, may cause harmful interference to radio communications. However, there is no guarantee that interference will not occur in a particular installation. If this equipment does cause harmful interference to radio or television reception, which can be determined by turning the equipment off and on, the user is encouraged to try to correct the interference by one or more of the following measures:

- Reorient or relocate the receiving antenna.
- Increase the separation between the equipment and receiver.
- Connect the equipment into an outlet on a circuit different from that to which the receiver is connected.
- Consult the dealer or an experienced radio/TV technician for help.

Model: ZW15S-N

Wireless Home Automation Control
ON/OFF Switch with Interchangeable
Face Cover



WARRANTY INFORMATION

This device is warranted to be free of material and workmanship defects for 2 years from the date of purchase. Original receipt or proof of purchase from an authorized retailer must be presented upon warranty claim. ALL claims must be verified and approved by Enerwave, Inc. Warranties from other Enerwave products may vary. This warranty is nontransferable and does not cover normal wear and tear or any malfunction, failure, or defect resulting from misuse, abuse, neglect, alteration, modification, or improper installation. To the fullest extent permitted by the applicable state law, Enerwave shall not be liable to the purchaser or end user customer of Enerwave products for direct, indirect, incidental, or consequential damages even if Enerwave has been advised of the possibility of such damages. Enerwave's total liability under this or any other warranty, express or implied, is limited to repair, replacement or refund. Repair, replacement or refund are the sole and exclusive remedies for breach of warranty or any other legal theory.

© 2016 Enerwave Home Automation • WWW.ENERWAVEAUTOMATION.COM • CA, USA

0206160026-02



PROGRAMMING

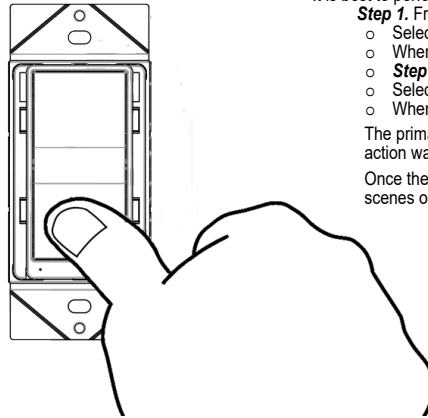
WIRELESS RANGE

This device complies with the Z-Wave standard of open-air, line of sight transmission distances of 100 feet. Actual performance in a home depends on the numbers of walls between the remote controller and the destination device, the type of construction and the number of Z-Wave enabled devices installed in the control network. Most Z-Wave enabled devices act as signal repeater and multiple devices result in more possible transmission routes which helps eliminate " RF dead-spots." Use the following chart only as a guide to maximize the signal range.

Distance of the ZW15S-N(or repeating Z-Wave module) to HUB:					
Type of Construction	▶	Wood Frame with Drywall		Brick, Tile or Concrete	
		Plastic J-Boxes*	Metal J-Boxes	Plastic J-Boxes*	Metal J-Boxes
Number of Walls or Obstructions	0**	100'	80'	100'	80'
	1	70'	56'	60'	48'
	2	49'	39'	36'	29'
	3	34'	27'	21'	17'

DEVICE INCLUSION/ EXCLUSION

The process of "Inclusion/ Exclusion" is to Add or Remove the device from the Hub. All Z-Wave devices must be "Included" on the Controller (Hub) before it can be controlled from a smart device. The Hub should be brought physically closer to the device just for the "Inclusion" process (recommended within 10ft). When finished, the Hub and device can be moved back to final installation location. Download the App or log onto the website associated with the Hub you are using and follow their Inclusion/ Exclusion instructions as each Hub's programming and features are different.



- During the Inclusion/ Exclusion process, the ON/OFF switch is used for including/ excluding the device.
- It is best to perform an Exclusion of the device prior to performing an Inclusion.

Step 1. From the Control Panel, go to the device Exclusion page.

- Select "Exclude Device".
- When prompted, press and hold the "ON" or "OFF" paddle on the switch for 3 seconds
- **Step 2.** Go to the "Add Device" page.
- Select "Include Device".
- When prompted, press and hold the "ON" or "OFF" paddle on the switch for 3 seconds.

The primary controller should indicate that the action was successful. If the controller indicates the action was unsuccessful, please repeat from Step 1.

Once the switch is part of the network, the same basic procedure is used to add the switch to groups & scenes or change advanced functions. Refer to the primary controller's instructions for details.

Step 3. Follow the On-Screen instructions in the Control Panel on adding or removing rooms, scenes, other devices, and other functions and features.

Step 4. To reset the ZW15S-N manually, simply press and hold the ON/OFF paddle for 10 seconds.

OPERATING THE ZW15S-N

You're now ready for basic operation of the ZW15S-N. The switch turns the Load (Lights) ON/OFF when the ON/OFF rocker switch is pushed. It can also be operated from your desktop or a smart device such as the iPhone, iPad or any Android device.

ADVANCED PROGRAMMING

WARNING: Advanced programming is recommended ONLY for experienced programmers. The ZW15S-N has customizable features/ functions that require writing codes. Changes to code may cause device to function improperly or to not function at all.

The following parameters require that you have an advanced controller. Basic remotes do not have this capability.

All-ON and All-OFF

Depending upon your primary controller, the ZW15S-N switch can be set to respond to ALL-ON and ALL-OFF commands in four different ways. Some controllers may not be able to change the response from its default setting. Please refer to your controller's instructions or technical support for information on whether or not it supports the configuration function and if so, how to change this setting. **The four possible responses for each button (top or bottom button on switch) are:**

- Push button will respond to ALL-ON and the ALL-OFF command (default).
- Push button will not respond to ALL-ON or ALL-OFF commands.
- Push button will respond to the ALL-OFF command but will not respond to the ALL-ON command.
- Push button will respond to the ALL-ON command but will not respond to the ALL-OFF command.

Association command class

ZW15S-N can support single association group with up to 5 target nodes by using command class COMMAND_CLASS_BASIC. When a destination(target) device is assigned to ZW15S-N by "Association Group", it will be activated and deactivated each time by a double-press of the ZW15S-N's button.

For instance, one short press of the ZW15S-Ns ON/OFF button will turn Load ON/OFF. Double-pressing the button will turn ON/OFF the load connected to ZW15S-N AND the target device simultaneously.

LED Light and Buttons Configuration

By default, one press of the "up" button will turn the Load on and the LED indicator will turn off. Use "Command_Class_Configuration" to configure the LED indicator to operate in reverse when the button is pressed.

Configuration details

- Parameter 1 (configure LED light state), default value is 0. Valid values are 0 and 1 with 1 byte.
- Parameter 2 (configure button toggle), default value is 0. Valid values are 0 and 1 with 1 byte.

ZW15S-N