

VeraLite

Quick Start Guide

Setup is quick and easy.

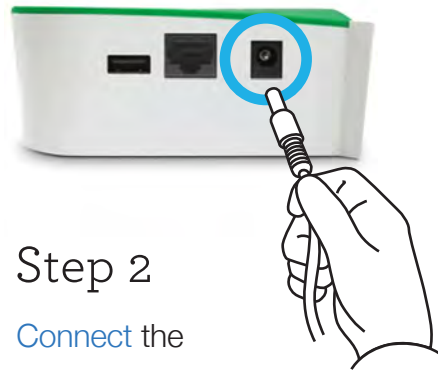


Please follow the connection guide to get started.



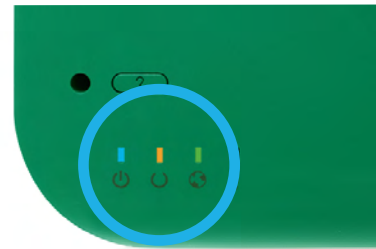
Step 1

Use the supplied network (Ethernet) cable to **connect to the Ethernet port** of your VeraLite; then connect the other end of the cable to an available Ethernet port on your modem, internet gateway, router, or switch.



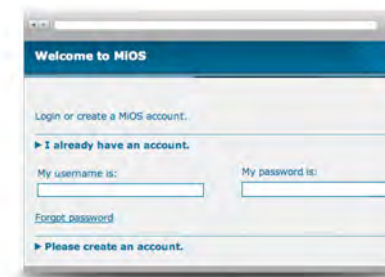
Step 2

Connect the VeraLite power adapter into its **power receptacle**, and then into an AC electrical outlet.



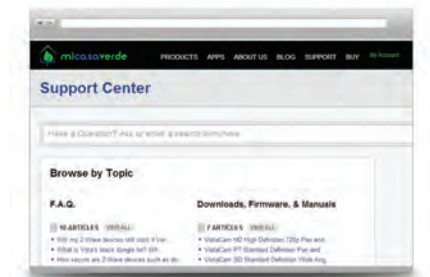
Step 3

Wait for the LED indicators for **Power**, **Ready** and **Network** to be lit and not blinking. Please allow up to 2 minutes for this initial startup. When the lights are solid, your VeraLite is now properly connected, powered up, and ready for the next configuration steps.



Step 4

Create an account at <https://cp.mios.com>. Once you've created and authenticated your account, the software will 'find' your VeraLite automatically and take you to the VeraLite Dashboard.



Step 5

Go to <http://www.micasaverde.com/setup/veralite> for easy, step by step instructions on **adding devices** and **automating scenes** with your VeraLite Smart Home Controller.

Need Help? Please view the complete [Owner's Manual online](#) for more detailed setup instructions and additional technical resources at <http://support.micasaverde.com>